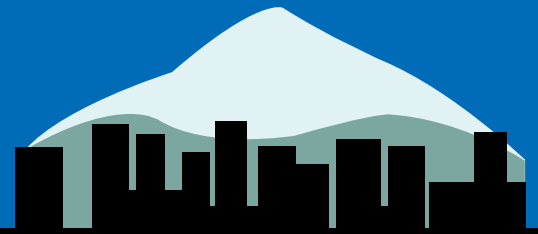


Microscopy & Microanalysis 2010 | August 1-5 | Portland, OR

# Advance Registration Brochure



See Inside for Registration,  
Hotel & Tour Information!

## M&M 2010



International  
Metallographic  
Society, Inc.  
An Affiliate Society of ASM International



# Welcome from the Program Committee

The annual Microscopy & Microanalysis Meeting is the premier meeting for materials scientists, biological scientists, and nanotechnologists who use microscopy or microanalysis in their professional activities. Microscopy & Microanalysis 2010 will be no exception! In recent years there has been a special emphasis placed on fostering greater inclusiveness in the Microscopy & Microanalysis meetings. We encourage researchers and technologists who may not routinely attend this meeting.

To this end, there are several areas of specific focus for M&M 2010, including an exciting opening with a special plenary symposium. The keynote speaker of this plenary session will be Professor Mark Welland of the University of Cambridge, UK. His talk, entitled "What Microscopy Can Tell Us about Alzheimer's and Related Diseases," will feature extensive application of scanning probe techniques. The plenary session also will feature the presentation of major society awards, including the 2010 MSA Fellows. Professor Welland's presentation will serve as an anchor for symposia in scanning probe microscopy in both biological and physical science. There will be an extensive surface science symposium that will feature many of the techniques that are complementary to scanning probe microscopy, including Auger electron spectroscopy, X-ray photoelectron spectroscopy, and secondary ion mass spectrometry. Secondary ion mass spectrometry, classically a technique limited to materials and geological sciences, has become a popular and extremely powerful technique in chemical mapping in biological systems as well.

This year we will celebrate the accomplishments of George Palade with the Palade Memorial Symposium, for his work in microscopy that led him to determine the intricate inner workings of cells. And, as always, we will continue to feature several symposia that emphasize microscopy and microanalysis of materials in nanotechnology and advanced energy systems.

The Executive Program Committee is pleased to welcome all microscopists and microanalysts, both veteran and novice, to the vibrant and exciting city of Portland, Oregon. We look forward to meeting you there!

*Sincerely,*

**John Mansfield**  
*Program Chair*

**David Giovannucci**  
*Program Vice-Chair*

**Brendan Foran**  
*MAS Co-Chair*

**Jaret Frafjord**  
*IMS Co-Chair*

**Daniel Beniac**  
*MSC/SMC Co-Chair*

**Luke Brewer**  
*MSA 2012 Ex officio*

**Mashashi Watanabe**  
*MAS 2011 Ex officio*

**Don Susan**  
*IMS 2011 Ex officio*

## Program Highlights

See printed Call for Papers and online at <http://www.microscopy.org> for complete program details.

### Microscopy and Microanalysis 2010

With over 30 Symposia, the M&M 2010 meeting promises to be a diverse and exciting one. Symposia of particular interest include:

#### George Palade Memorial Symposium

Nobel Laureate George E. Palade is considered to be the father of modern cell biology for his work combining the use of electron microscopy and cell fractionation to study the structure and function of cellular membranes. He is best known for his pioneering work in the transport of proteins along secretory pathways. He passed away in 2008 after a long and distinguished career and this symposium will highlight some of his early work, together with the latest scientific contributions that continue the work of this great scientist to better understand the complexity of cellular structure and function.

#### Scanned Probe Microscopies

We welcome our colleagues whose research lies in the area of scanning probe microscopy. In addition to Professor Mark Welland's keynote presentation at the Opening Plenary Session, this year there are two full symposia that focus on scanned probe techniques.

#### 3D Electron Microscopy

There will be a strong focus on 3D microscopy with symposia on biological and physical science applications, together with an instrument and techniques symposium in 3D methods.

#### Surface Microscopy and Microanalysis in Materials and Biological Systems

This symposium will have a particular focus on new developments and an application of SIMS in biological systems.

#### Ultrafast EM

Ultrafast microscopy and the effects of ultrafast light on materials is an area that is enjoying rapid expansion. This symposium

will focus on both the progress in microscope development and some application of the effects of femtosecond light on materials and biomaterials.

#### Sunday Short Courses

***Our widest range of Short Courses ever!***

##### BIOLOGICAL SCIENCES

- Cryo-preparation for TEM
- Immunolabeling Technology for Light and Electron Microscopy
- 3D Electron Microscopy of Macromolecular Assemblies
- Live Cell Imaging Using Fluorescence Methods

##### MULTI-DISCIPLINARY

- Electron Tomography in Life and Material Sciences
- Scientific Digital Imaging: Ethics and Execution
- Imaging and Analysis with Variable Pressure or Environmental SEM
- Scanning Cathodoluminescence Microscopy and Spectroscopy
- Advanced Focused Ion Beam Methods

##### PHYSICAL SCIENCES

- High-Resolution TEM and STEM
- Microstructural Analysis Techniques and Interpretation for Electronic Devices
- Microscopy & Nanomechanical Characterization

# New and Exciting at M&M 2010!

## Opening Plenary Session

Monday, August 2, 2010, 8:30 am

Oregon Convention Center  
Oregon Ballroom

### KEYNOTE SPEAKER:

**Professor Mark Welland**  
The Nanoscience Centre  
University of Cambridge, UK



The M&M 2010 Program committee is pleased to present the Opening Plenary Session. Professor Mark Welland, FRS, FREng will present an intriguing talk on his research entitled: "What Microscopy Can Tell Us about Alzheimer's and Related Diseases."

Prof. Welland's talk will focus on the ability of scanned probe techniques to quantify the properties of materials at the the nanoscale. In particular, it will demonstrate how structural properties of protein aggregates, such as those deposited during diseases such as Alzheimer's, provide a basis for the elucidation of the underlying physical principles that characterize the progression of and challenges in treatment of Alzheimer's and related diseases.

Prof. Welland is the head of The Nanoscience Centre at Cambridge University. He obtained his bachelor's degree in physics at the University of Leeds and his doctorate at the University of Bristol, also in physics, with a particular focus on electron microscopy. His career in nanotechnology began while he was performing his post-doctoral research at IBM's Thomas J. Watson Research Center in Yorktown Heights, New York. He was an important member of the team that developed one of the first scanning tunneling microscopes. In 1985, Prof. Welland moved to Cambridge in 1985 and set up the first tunneling microscopy group in the UK in collaboration with Prof. John Pethica. His success in the field of scanning probe microscopy has won him many honors. Under his direction, the Nanoscale Science Laboratory at Cambridge researches into a number of aspects of nanotechnology ranging from sensors for medical applications to understanding and controlling the properties of nanoscale structures and devices.

## Biological Symposia

- Imaging of Cytoskeletal Dynamics and Abnormalities in Disease
- Microscopy Continues to Lead Advances in Alzheimer's Disease
- Man, Machine, Microscope
- Microfluidic Devices: Emerging Platforms for Live Cell Microscopy
- 3DEM: Cellular, Bacterial and Viral surfaces: What Is Out There?
- Clinical and Investigative Microscopy of Infectious Diseases

## Physical Sciences Symposia

- Nanoscale Characterization of Next-Generation Photovoltaic Devices and Materials
- Imaging and Spectroscopy of Interfaces and Surfaces in Advanced Materials and Nanostructures
- Microscopy and Analysis in Forensic Science
- Structural and Chemical Analysis of Materials in the Nuclear Power Industry
- Particles, Pores and Composites—Nano to Macro
- Probing the Properties of Nanomaterials with Microscopy
- 3D-TEM: Quantitative Analysis at the Nano and Microscale Using Tomographic Techniques
- Inside Modern Micro-devices at the Atomic Scale

## Instrumentation & Techniques Symposia

- Vendor Symposium: Creating the Tools for Science
- Aberration-Corrected Electron Microscopy: Exploring Materials Through New Eyes
- FIB Science and Applications in Materials and Biology
- Computational Aspects of Data Visualization and Quantitative Microscopy and Microanalysis
- Transmission EM and Spectroscopy at or Near Realistic Conditions
- Surface Microscopy and Microanalysis in Materials and Biological Systems
- Scanned Probe Microscopies: Probing Advanced Material Properties on the Micro- and Nano-Scale
- Ultrafast EM and the Effects of Ultrafast Events on the Structure and Chemistry of Materials
- TEM Phase Contrast Imaging in Biological and Materials Science
- Imaging Fields with Holography
- Slow Electrons, Fast Ions: How Well Do We Image and What Do We Image With Scanning Beam Microscopy?
- Microscopy, Microanalysis and Image Analysis in the Pharmaceutical Science
- Specimen Preparation for SEM and EBSD
- Image Analysis & Quantitative Microscopy
- Failure Analysis: Practical Microscopy, Metallography and Fractography from Real World Applications or Research Case Studies
- Scanning Cathodoluminescence Microscopy and Spectroscopy: New Developments and Applications
- 3DEM: A Real Bridge Between Light and X-Rays
- Compositional X-Ray Imaging

# REMINDER: *Call for Papers Deadline is February 15, 2010!*

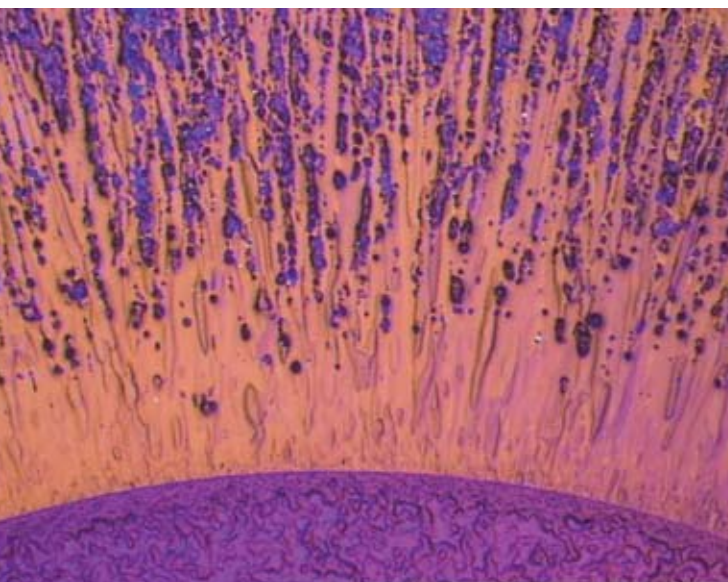


Image courtesy of Gabriel M. Lucas, Buehler, Ltd.

**Submit your papers through the online portal at <http://www.microscopy.org>.**

**Did you see your M&M 2010 Call for Papers?** It was mailed to you in your Nov/Dec 2009 issue of *Microscopy Today*. You can also find it online with FULL program details at <http://www.microscopy.org>.



- All Symposia & Full Topic List
- Submission requirements
- Paper Submission Portal
- All Awards Information & Criteria
- Tutorials, Short Courses, Intensive Workshops

***The deadline is approaching...submit your paper(s) today!***

**ATTENTION STUDENTS! *Submit your papers!***

Getting your paper accepted at the M&M meeting is an excellent way to jump-start your career AND be involved in one of the largest gatherings of microscopists in the world! Be sure to check out the AWARDS page on the M&M 2010 website. Many awards are reserved JUST FOR STUDENTS and have scholarships and prizes that can help support your trip to Portland.

**M&M 2010 encourages students to attend!**

- Heavily-discounted student registration fees
- Special student bursary program allows you to attend the meeting AND get paid for it!
- Low-cost housing options
- Special events and networking onsite JUST for students

For more information, e-mail [meetingmanager@microscopy.org](mailto:meetingmanager@microscopy.org) or visit <http://www.microscopy.org>.

## ***In-Week Intensive Workshops***

Get the best of both worlds when you sign up for one of these fantastic intensive workshops. Four (4) afternoons (16 hours) of intensive short-course-style workshop instruction combines with the regular meeting content to bring you an unparalleled education experience. You'll be able to go to sessions, see posters, visit exhibits, and take advantage of all the social and professional networking that M&M has to offer. All this is in addition to participating in a top-notch, multi-day intensive workshop. ***(Workshop registration includes a full meeting registration to M&M 2010.)***

Select from one of the following topics:

- Basic Confocal Light Microscopy—Once More, Jay and Silent Bob do Basic Confocal Microscopy
- Introduction to SEM Imaging and X-Ray Compositional Analysis
- Nanomaterial Microscopy & Microanalysis: Tools and Preparation

## ***Special Educational & Outreach Opportunities!***

Exact days/times TBD. Check <http://www.microscopy.org> for updates.

### **Learn to See with the Private Eye: A Project MICRO Workshop for Attendees and Teachers**

Rediscover the drama and wonder of looking closely at the world! "The Private Eye" is an outstanding educational program (headquartered just east of Portland) that can be used by any teacher or volunteer leader to introduce the microworld at any grade level, in any classroom: K-12 through life....

### **Microscopy in the Classroom: How to Use It and How to Teach It**

In this session, presentations and instrument demonstrations will illustrate how microscopy can be incorporated into classroom curricula and outreach programs to engage students in cutting-edge science learning.

### **It's a Family Affair**

This session is aimed at children of all ages, including those of us who still consider ourselves children. Speakers will present a wide range of fascinating scientific microscopic images, ranging from insects to atoms, and plants to metals. Hands-on activities and demonstrations prove that science is fun!



Following the presentation, children and their parents will have the opportunity to participate in a guided tour of the exhibit floor, to view the microscopes and see how they work.

***FREE. No advance registration required.***

# M&M 2010 Sunday Evening Social Event

## Supper Reception at the Oregon Zoo

Sunday, August 1, 2010 • 6:30 pm

Additional tickets: \$70 each

Join your fellow M&M attendees for an alfresco picnic dinner at one of attractions in the greater Portland area—the Oregon Zoo! Have a drink or two, enjoy a delicious buffet dinner, and catch up with your friends and colleagues in the gorgeous outdoor setting of the Oregon Zoo's tented seating areas, all while getting the chance to see one of the oldest conservation-minded zoos in the country.

Located in beautiful Washington Park, the Zoo is a five-minute drive west of downtown Portland. Shuttle buses will be available to bring M&M attendees back and forth, and parking is just \$2 per car. For those attendees who would rather take public transportation, Portland's MAX light-rail system has a stop just a few steps away from the Zoo entrance, for a fare of under \$3.00 each way.



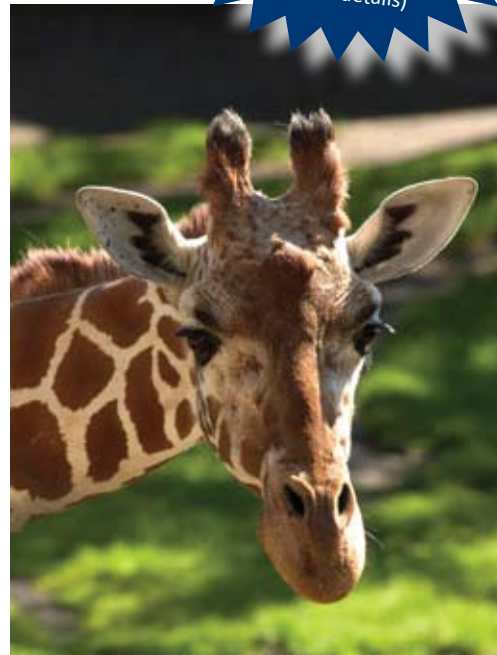
*A blue poison dart frog, part of the Oregon Zoo's flooded forest Exhibit.*

In 1887, Richard Knight, a local pharmacist who collected animals as a hobby, officially presented his menagerie to the city and the oldest zoo west of the Mississippi was created. The Oregon Zoo is home to animals from all corners of the world, including Asian elephants, Peruvian penguins and Arctic polar bears. From the mist-filled Africa Rain Forest to the majestic Great Northwest exhibits, the zoo encourages visitors to understand and experience the natural world. Committed to conservation of endangered species and their

habitats—both locally and around the globe—the zoo is a center for wildlife preservation and field research. The Oregon Zoo's award-winning education programs serve nearly 700,000 people both at the zoo and at schools, senior and community centers around the region. A summer concert series, seasonal events and the zoo railway help this popular Oregon attraction draw more than one million visitors each year.



*A Siberian tiger at the Oregon Zoo.*



*A portrait of a reticulated giraffe at the Oregon Zoo.*

**Ticket included with most registration types**  
(check the registration form for details)

## M&M 2010 Exposition

Microscopy and Microanalysis 2010 will be the premier meeting of the year for scientists and technologists worldwide who use microscopes and microbeams to image and analyze samples with high spatial resolution. The diversity of our annual meeting spans many disciplines from the life sciences across the physical sciences, all unified by the tools of our trades. Scientific attendees from around the globe are expected to attend. The exhibits always demonstrate state-of-the-art equipment. Check out the Exhibits page at [www.microscopy.org](http://www.microscopy.org); click on the M&M 2010 logo for all meeting-related information.

Join participating exhibitors for the Vendor Tutorials after the exhibit hall is closed. Exhibitors have the opportunity to demonstrate their products and/or equipment to a smaller group of interested attendees. Attendees will have an opportunity to sign up onsite to participate. Exhibitors are encouraged to participate at no additional cost.

For exhibit information, contact Doreen Bonnema at 312-541-0567 x 653 or [doreen@corcexpo.com](mailto:doreen@corcexpo.com).

# M&M 2010 Tour & Activity Information

## Portland is full of fun things to see and do! How to pick?

The M&M 2010 Local Host Committee (LHC) has put together several great activities for you to participate in while you are in town for the meeting. Wine, beer and scenery—three of Portland's most appealing aspects—are represented here.

Registration for these activities must be done **separately** from your meeting registration. Click on the LHC's site to sign up and submit payment information. Additional information on each activity is available where indicated.

## Taste Oregon's Wine Bounty!

### Wine Tasting

Sunday, August 1, 2010

3:00 PM – 5:00 PM

\$25/person

Here's a great opportunity to discover Oregon's wines! Oregon is one of the world's premier regions for growing and making Pinot Noir, and produces great white and rose wines as well. Great Wine Buys ([www.greatwinebuys.com](http://www.greatwinebuys.com)), located at 1515 NE Broadway (within a short walk from the convention center), will provide a short synopsis on the varieties available and guide you through a tasting of five different wines. They will also offer more personal advice tailored to your tastes. Come with your colleagues (and your wine questions!) for a mellow afternoon before the meeting starts.

### QUESTIONS?

Contact Aurelie Snyder at [snyderau@ohsu.edu](mailto:snyderau@ohsu.edu).

To register for this event, visit [www.physics.pdx.edu/mm2010](http://www.physics.pdx.edu/mm2010).



## Annual M&M Golf Tournament

Head out on Sunday morning to the locally renowned Stone Creek Country Club in Oregon City for the annual M&M Golf Tournament! Tee time is 8:45 AM. Fee is \$100/person and will include greens fees, golf cart, range balls, lunch and transportation to and from the Oregon Convention Center.

### QUESTIONS?

Contact Bruce Arey, [bruce.arey@pnl.gov](mailto:bruce.arey@pnl.gov), 509-371-6485.

**Tournament is being arranged by the Pacific Northwest Microscopy Society.**

To register for this event, visit [www.physics.pdx.edu/mm2010](http://www.physics.pdx.edu/mm2010).



# M&M 2010 Tour & Activity Information

## Take a Ride on the Portland Brew Bus!

### Micro-Brew Tour & Tasting

Tuesday, August 3, 2010

6:00 pm – 10:45 pm (door to door)

\$50/person

The 3-4 hour BrewBus ([www.brewbus.com](http://www.brewbus.com)) will give a fun, educational tour of Portland to three or four breweries, where you can sample appetizers and 15-20 fresh beers. Learn from the on-board guide about "Portland and Oregon Firsts," its craft brewing, and why Portland has over three dozen breweries (more than any city in the world!). You'll also receive a Personal Sampling Scorecard to help you keep track of all the beers you sample, which styles you like, and which ones you want to come back for!

BrewBus will depart from the Oregon Convention Center along MLK Blvd. at 6:00 PM. Tour lasts approximately four hours and will return to the OCC and individual hotels by 10:45 PM.

To register for this event, visit: [www.physics.pdx.edu/mm2010](http://www.physics.pdx.edu/mm2010).



## Portland Dinner Cruise

Enjoy dinner and a Portland tour aboard the Portland Spirit!

Wednesday, August 4, 2010

6:30 pm – 9:00 pm (boarding at 6:00 pm-Salmon Street/Naito Parkway embarkation)

\$45/person – advance reservations required

Fresh Northwest cuisine, grand scenery and a warm summer evening are the main ingredients you need for a memorable dinner cruise ([www.portlandspirit.com](http://www.portlandspirit.com)). Join fellow M&M attendees for a chartered, 2.5-hour sail aboard the Portland Spirit, a 150' yacht with panoramic views from the three public decks, two of which are enclosed and climate-controlled. The cruise will take you on a unique tour through downtown Portland on the Willamette River, while you enjoy a delicious made-to-order dinner with salmon, chicken and vegetarian main-course options and plated dessert. Several full-service no-host (cash) bars provide a vast wine and beverage selection.

*Made possible by the generous support of Ted Pella, Inc.*

To register for this event, click here: [www.physics.pdx.edu/mm2010](http://www.physics.pdx.edu/mm2010).

**ADVANCE RESERVATIONS REQUIRED!**



## After the Meeting – Cruise to Alaska!

The Pacific Northwest Microscopy Society (PNMS) is offering a post-meeting cruise to Alaska! Ship sets sail from downtown Seattle and travels to Juneau, Sitka, Ketchikan, and Victoria, Canada. Cruise with your fellow M&M attendees; sail past enormous glaciers; see whales, bald eagles, and pristine wilderness, and spend a week on the luxurious Holland America Zaandam!

To book passage, or for more details, call (503) 641-7447 or (800) 848-7120, or email [info@finevoyages.com](mailto:info@finevoyages.com). **Book soon for best availability!**

(Check out their 2-page ad on [www.microscopy.org](http://www.microscopy.org).)

**Sail Dates:** Departure **Friday, August 6**; return **Friday, August 12**.

**Brought to you by:** Pacific Northwest Microscopy Society



[www.msa.microscopy.org/MSALAS/PNEMS/](http://www.msa.microscopy.org/MSALAS/PNEMS/)

# M&M 2010 Housing Instructions & Form

Hotel reservation requests may be submitted for M&M 2010 via ONE of the following methods: (available beginning January 5, 2010)

- INTERNET** Make your reservation at the M&M 2010 website at [www.microscopy.org](http://www.microscopy.org) - "Hotel and Travel."
- FAX** Use one form per request; make copies as needed. Fax fully completed forms with valid credit card to (503) 275-9782.
- PHONE** Call the M&M 2010 Housing Bureau, 9:00am–5pm PT, Monday-Friday toll free: 1-877-678-5263, #2, or 1-503-275-9293 (international).
- MAIL** Mail fully completed forms with valid credit card (no checks, please) to: M&M 2010 Housing Bureau c/o Travel Portland  
1000 SW Broadway, Suite 2300  
Portland, OR 97205
- QUESTIONS?** Send an e-mail to: [housing@travelporland.com](mailto:housing@travelporland.com) or call 1-877-678-5263, ext. 2.

## ACKNOWLEDGEMENTS

The M&M 2010 Housing Bureau automatically sends acknowledgements by e-mail once the request has been processed. You will not receive a confirmation from the hotel. Please review it carefully for accuracy and print a copy for your records. If you do not receive a confirmation within 2 business days after any transaction, please contact the M&M 2010 Housing Bureau via phone 1-877-678-5263, ext. 2 or e-mail [housing@travelporland.com](mailto:housing@travelporland.com).

## PAYMENT

All hotels require a valid credit card to process each reservation request (Visa, MasterCard, American Express or Discover). Requests received without valid credit card information will be returned and will not be processed. Credit cards must be valid through August 31, 2010.

## ROOM RATES/TAXES

To take advantage of the special M&M 2010 rates, book your reservation by **July 7, 2010**. After that date, M&M room blocks may be released and hotels may charge higher rates. All rates are per room night and do not include 12.5% occupancy tax (subject to change). Some hotels may charge additional fees for rooms with more than one occupant.

Special requests cannot be guaranteed. Hotels will do their best to honor all requests. The hotels will assign specific room types at check-in, based on availability.

## CHANGES & CANCELLATIONS – IMPORTANT – PLEASE READ!

**Before July 22, 2010:** Changes to name, stay dates, address or special requests can be made on-line through the housing portal at [www.microscopy.org](http://www.microscopy.org). You may contact the M&M 2010 Housing Bureau (email, phone or fax) to modify or cancel your reservation. Cancellations made after **July 7, 2010** will forfeit a \$50 cancellation fee. Cancellations made within 72 hours of arrival date will forfeit one night's room and tax charges.

**After July 22, 2010:** All changes and cancellations must be made directly with the assigned hotel. Do not contact the hotel directly until AFTER July 22, 2010.

## DON'T BE A NO-SHOW!

Your hotel will hold your reservation for your given arrival date. If you arrive after that date, your reservations will have been cancelled and your deposit of one night's room and tax will be forfeited.

## A KIND NOTE ABOUT CALLING THE HOTEL "JUST TO BE SURE"

Please do not call your hotel "just to be sure" until after July 22, 2010. Please understand that processing your reservations from the Housing Bureau into the hotel systems may take several days. Rest assured that if you have received a confirmation already from the M&M 2010 Housing Bureau, the hotel will honor your booking. Thank you for your consideration.

## GROUP/EXHIBITOR BLOCK RESERVATIONS (PLEASE READ CAREFULLY, as some aspects regarding group reservations have changed!)

To reserve a group of reservations, please contact the M&M 2010 Housing Bureau via the email address or phone number for special assistance. All groups utilizing 25 or more rooms on a given night will need to sign a separate housing contract. All group rooming lists will be due by June 1, 2010.

## GUEST INFORMATION

Use one form for each room requested – make copies as needed.

Arrival Date \_\_\_\_\_ Departure Date \_\_\_\_\_  
First Name: \_\_\_\_\_ M.I. \_\_\_\_\_  
Last Name: \_\_\_\_\_  
E-mail Address: \_\_\_\_\_  
Phone: \_\_\_\_\_ Fax: \_\_\_\_\_  
*\*If providing international telephone numbers, please include country and city access numbers*  
Company: \_\_\_\_\_  
Address: \_\_\_\_\_  
Address 2: \_\_\_\_\_  
City/State/Province: \_\_\_\_\_  
Zip/Postal Code, Country: \_\_\_\_\_

## HOTEL and ROOM INFORMATION

Please list the names of four hotels in order of preference.

First: \_\_\_\_\_  
Second: \_\_\_\_\_  
Third: \_\_\_\_\_  
Fourth: \_\_\_\_\_

*If all requested hotels are unavailable, a reservation will be made at the next available hotel.*

### Please indicate criteria for placement:

Proximity to convention center  Comparable room rate  
Circle # of beds requested: 1 2 Circle # of occupants: 1 2 3 4  
List all room occupants: \_\_\_\_\_  
\_\_\_\_\_  
\_\_\_\_\_

Check here if you have a disability requiring special services.  Non smoking request  
Special requests: \_\_\_\_\_  
\_\_\_\_\_

## GUARANTEE INFORMATION

All reservation requests must include guarantee information. Requests received without proper guarantee information will NOT be processed. The preferred and easiest method of guarantee is with a credit card (valid through the dates of the convention). If you do not have a credit card to use for guarantee, check deposits in the amount of US \$175 (per room requested) will be accepted via mail only. This deposit will be applied toward your hotel room(s). Make all check payments payable to: Travel Portland Housing, 1000 SW Broadway, Suite 2300, Portland, OR 97205

American Express  Discover  Diner's Club  MasterCard  Visa

Card Number: \_\_\_\_\_ Exp. Date: \_\_\_\_\_

Name on Credit Card: \_\_\_\_\_

Cardholder's Signature\* \_\_\_\_\_

*\*Necessary to process reservation*

### Notice regarding cancellation fees and dates to keep in mind:

Cancellation requests received after July 7, 2010 will be subject to a US \$50 fee. Cancellations made within 72 hours of the scheduled arrival date are subject to a fee equal to one night's room rate plus tax. These fees will be charged to the credit card used to make the reservation. Check cancellations will incur a US \$50 processing fee and any hotel cancellation fees (if applicable).

# M&M 2010 Housing Instructions & Form

Book your hotel at [www.microscopy.org](http://www.microscopy.org) or call for reservations 1-877-678-5263

## Portland, Oregon

The city of Portland, Oregon, has been proclaimed as North America's "Best Big City," according to *Money* magazine. Come to the M&M 2010 meeting, and experience the region's natural beauty, its bustling local scene, terrific microbrews and wineries, fresh local cuisine and welcoming accommodations—much of which can be accessed via the region's convenient and eco-friendly light-rail system.

Summertime in Portland is "high season" and you'll soon see why.

Clear blue skies, low humidity, warm days and comfortably cool nights are a big part of why people flock to the Pacific Northwest in August.

### Portland International Airport

(PDX) is approximately 10 miles (20 mins) from the Oregon Convention Center and many of the M&M 2010 conference hotels.

[www.portofportland.com/PDX\\_home.aspx](http://www.portofportland.com/PDX_home.aspx)

- Nonstop & direct service to more than 100 cities worldwide
- Free Wi-Fi in all terminals
- Serviced by 17 airlines

**AMTRAK** provides daily passenger rail service on its Cascades, Coast Starlight, and Empire Builder routes to Portland's Union, located in downtown Portland. Visit [www.amtrak.com](http://www.amtrak.com) for routes, fares and reservations.

For information regarding visiting the Portland area, go to [www.travelportland.com](http://www.travelportland.com).

## M&M 2010 – Hotel Information

M&M 2010 Meeting hotel room rates listed below, plus tax, are available exclusively to attendees of the Microscopy & Microanalysis 2010 meeting. Hotel reservations may be made after **January 5, 2010**. Visit MSA's website, and click on the M&M 2010 link for further details and online reservation portal.

Hotel Name	M&M Rate	# Rooms in Block	Distance from Oregon Convention Center	Distance from MAX Light-Rail Station	Free Breakfast?	Free Internet?
Doubletree – Lloyd Center	\$156.00	350	5 blocks	Across street	No	Yes ( <i>public spaces only</i> )
Courtyard by Marriott –Lloyd Center	\$150.00	125	3 blocks	3 blocks	No	Yes
Crowne Plaza – Convention Center	\$164.00	175	6 blocks	6 blocks	No	Yes
Residence Inn – Convention Center	\$150.00	60	10 blocks	4 blocks	Yes	Yes
Red Lion – Convention Center	\$142.00	160	2 blocks	2 blocks	No	Yes
La Quinta Inn – Convention Center	\$105.00	65	3 blocks	3 blocks	Yes	Yes

\* Please do not call hotels directly for reservations. Please use the M&M 2010 housing bureau – online or fax reservations. ([www.microscopy.org](http://www.microscopy.org))



# M&M 2010 Attendee Registration Form

M&M 2010 is going green! Meeting Proceedings are available to all meeting attendees\* on CD/DVD. Printed proceedings books will be available for purchase on demand through Cambridge University Press. Check the M&M 2010 website for details.

## Step 1 – Attendee Information

MSA Member ID	MAS Member ID	IMS Member ID	MSC/SMC Member ID

First Name	MI	Last Name
------------	----	-----------

Job Title/Degree(s)	Affiliation/University/Company
---------------------	--------------------------------

Email Address <i>(REQUIRED-confirmations will be sent via email)</i>
--

Address			
---------	--	--	--

City	State/Province	Zip/Postal Code	Country
------	----------------	-----------------	---------

Phone (country code/area code/number)	Fax (country code/area code/number)
---------------------------------------	-------------------------------------

I require special accommodation due to disability, health concerns, or physical challenges to fully participate in the M&M meeting. I have attached a written description of my needs.

Check if you do not wish to have your email and mailing address shared with our exhibitors and sponsors. (Phone and fax numbers are never shared.) Checking this box will prevent receipt of hospitality event and extra-curricular educational invitations.

## Step 2 – Conference Registration

\* All attendees (except Exhibit Hall only) will receive a copy of the proceedings on CD/DVD.

**EARLY RATE**  
On or before  
June 21

**REGULAR RATE**  
June 22 – July 31

<input type="checkbox"/> In-Meeting Intensive Workshop—Member Rate	<b>\$890</b>	<b>\$1000</b>
<input type="checkbox"/> In-Meeting Intensive Workshop—Non-Member Rate	<b>\$1000</b>	<b>\$1135</b>
<input type="checkbox"/> In-Meeting Intensive Workshop—Student Rate <i>(Includes FULL MEETING registration + one workshop; check below. See Call for Papers for details.)</i>	<b>\$670</b>	<b>\$670</b>

All workshops run from 1PM – 5PM, Monday through Thursday. Please check the workshop you will attend (*check only one*):

- X-22 Basic Confocal Light Microscopy
- X-23 Introduction to SEM Imaging and X-ray Compositional Analysis
- X-24 Nanomaterial Microscopy & Microanalysis: Tools and Preparation

<input type="checkbox"/> Member or <input type="checkbox"/> Invited Speaker (Full Meeting)	<b>\$390</b>	<b>\$500</b>
<input type="checkbox"/> Non-Member (Full Meeting)	<b>\$500</b>	<b>\$610</b>
<input type="checkbox"/> Student Member (Full Meeting)* <i>Proof of student status required.</i>	<b>\$170</b>	<b>\$170</b>
<input type="checkbox"/> Student Non-Member (Full Meeting)* <i>Proof of status required. No Sunday Reception ticket.</i>	<b>\$170</b>	<b>\$170</b>
<input type="checkbox"/> Emeritus Member (Full Meeting) <i>No Sunday Reception ticket.</i>	<b>\$170</b>	<b>\$170</b>
<input type="checkbox"/> Partial Meeting One Day Only <i>No Sunday Reception ticket.</i>	<b>\$220</b>	<b>\$220</b>
Specify day: <input type="checkbox"/> Mon <input type="checkbox"/> Tues <input type="checkbox"/> Wed <input type="checkbox"/> Thurs		
<input type="checkbox"/> Exhibit Hall Only Pass <i>No proceedings, Sunday Reception ticket, or access to sessions.</i>	<b>\$25</b>	<b>\$25</b>

\*  I wish to apply for a student bursary and will be expected to work up to 20 hours during the meeting and/or pre-meeting events. Please contact me with details.

## Instructions

- Be sure to complete both pages of this registration form.
- Please print all information.
- Use separate form for each attendee registration.
- To avoid duplicate charges, do not mail form after faxing.
- Payment must be in U.S. Dollars.
- Faxed forms without valid credit card information WILL NOT be processed.
- Only registrations with FULL payment will be processed. NO EXCEPTIONS.
- Deadline to register with Advance Discount is June 21, 2010 (fax must be date-stamped and mail must be postmarked June 21 or earlier).
- After July 23, please bring form with you to register on-site.

### 10. CANCELLATION POLICY:

Refund requests will be honored (less \$55 processing fee) if received in writing by July 14, 2010. E-mail [MMRegistration@conferencemanagers.com](mailto:MMRegistration@conferencemanagers.com) or fax (703) 964-1246. No refunds will be given after July 14, 2010.

*PLEASE NOTE:* No-shows, including, but not limited to, cancelled/delayed travel and/or inability to enter the US, are non-refundable. Refunds will NOT be given for social event tickets.

- All paid registrations (excluding Exhibit Hall Only) include access to the scientific sessions.
- Program Cancellation: In the unlikely event of conference cancellation, MSA will refund 100 percent of registration fees paid. MSA assumes no liability for any penalty fees on airline tickets, deposits for hotel accommodations, or any other fees, charges, penalties, or other incidental costs that a registrant might incur as a consequence of cancellation.

### FOR ADDITIONAL INFORMATION, CONTACT:

Conference Registration at (703) 964-1240 x17 or [MMRegistration@conferencemanagers.com](mailto:MMRegistration@conferencemanagers.com)

### ONLINE:

Register online at <http://www.microscopy.org> (available February 1, 2010)

### FAX:

Fax your registration form with credit card payment information to (888) 251-3234.

### MAIL:

Mail completed form with credit card information or check to:

M&M 2010 Registration  
11260 Roger Bacon Drive, Suite 500  
Reston, VA 20190

# M&M 2010 Attendee Registration Form

## Step 3 – Pre-Meeting Registration

Member rates apply to members of all sponsoring societies (see box in Step 1). Programs listed below are **NOT** included in any conference registration package.

**EARLY RATE**  
On or before June 21

**REGULAR RATE**  
June 22 – July 31

### SHORT COURSES

Sunday Only—Full Day, 8:30 am – 5 pm

**MEMBER**  
Early/Regular\*  
\*see above

**NON-MEMBER**  
Early/Regular\*  
\*see above

#### Biological Sciences

<input type="checkbox"/> X10 Cryo-preparation for TEM	\$160/\$230	\$180/\$260
<input type="checkbox"/> X11 Immunolabeling Technology for Light and Electron Microscopy	\$160/\$230	\$180/\$260
<input type="checkbox"/> X12 3D Electron Microscopy of Macromolecular Assemblies	\$160/\$230	\$180/\$260
<input type="checkbox"/> X13 Live Cell Imaging Using Fluorescence Methods	\$160/\$230	\$180/\$260

#### Multi-Disciplinary

<input type="checkbox"/> X14 Electron Tomography in Life and Material Sciences	\$160/\$230	\$180/\$260
<input type="checkbox"/> X15 Scientific Digital Imaging: Ethics and Execution	\$160/\$230	\$180/\$260
<input type="checkbox"/> X16 Imaging and Analysis with Variable Pressure or Environmental SEM	\$160/\$230	\$180/\$260
<input type="checkbox"/> X17 Scanning Cathodoluminescence Microscopy and Spectroscopy	\$160/\$230	\$180/\$260
<input type="checkbox"/> X18 Advanced Topics in the Theory and Use of Focused Ion Beam Tools	\$160/\$230	\$180/\$260

#### Physical Sciences

<input type="checkbox"/> X19 High-Resolution TEM and STEM	\$160/\$230	\$180/\$260
<input type="checkbox"/> X20 Microstructural Analysis Techniques and Interpretation for Electronic Devices	\$160/\$230	\$180/\$260
<input type="checkbox"/> X21 Microscopy and Nanochemical Characterization	\$160/\$230	\$180/\$260

## Step 4 – Optional Fees and Guest Badge

<input type="checkbox"/> <b>IMS Awards Banquet</b> (Wednesday, August 4)	# Tickets _____ @ \$65/person = \$ _____
<input type="checkbox"/> <b>Sunday Reception Ticket</b> – Additional <i>(one ticket is included in all full member, full non-member &amp; student member registrations)</i>	# Tickets _____ @ \$70/person = \$ _____
<input type="checkbox"/> <b>Child's Reception Ticket</b> (ages 3 – 11; under 3 free)	# Tickets _____ @ \$15/child = \$ _____
<input type="checkbox"/> <b>Proceedings CD/DVD</b> – Additional Copy of CD/DVD Proceedings <i>(One copy of proceedings CD/DVD is included in all registrations except Exhibit Hall Only.)</i>	# CDs _____ @ \$25/CD = \$ _____
<input type="checkbox"/> <b>M&amp;M 2010 Polo Shirt</b>	# Shirts _____ @ \$25/shirt = \$ _____

Pre-orders must be received by **June 22**. A limited number of shirts will be sold onsite in Portland.

Shirt Size (indicate quantity of each size):  S  M  L  XL  XXL

Spouse/Guest Name \_\_\_\_\_

Spouse/Guest Affiliation \_\_\_\_\_

## Step 5 – Payment Information

- Enclosed is my check for \$ \_\_\_\_\_ in U.S. Dollars, payable to M&M 2010 (see **Grand Total** in chart).

*(Checks will be processed electronically. If you do not want your check converted electronically, please select another method of payment, e.g. credit card.)*

**MSA's Federal Tax ID # is 116-042-333.**

TOTAL FEES	Member Early/Regular*	Non-Member Early/Regular*
Total Step 2		
Total Step 3		
Total Step 4		
<b>Grand Total</b> (add steps 2-4)		

- Please charge my credit card: (check one)  AmEx  Visa  MasterCard

Card # \_\_\_\_\_ Exp Date \_\_\_\_\_

Name on Card (please print) \_\_\_\_\_ Billing Address \_\_\_\_\_

Authorized Signature \_\_\_\_\_ Billing Address \_\_\_\_\_

*Your signature authorizes your credit card to be charged for the total payment due. We reserve the right to charge the correct amount if different from the total listed.*

# M&M 2010 Meeting

11260 Roger Bacon Drive

Suite 500

Reston, VA 20190



# M&M 2010

## Advance Registration Brochure

Microscopy & Microanalysis 2010 | August 1-5 | Portland, OR

## Advance Registration Brochure



# Open Me!

Registration, Hotel and Portland

Tour Information Inside.

New Program Information, too!

<http://www.microscopy.org>



International  
Metallographic  
Society, Inc.  
An Affiliate Society of ASM International

